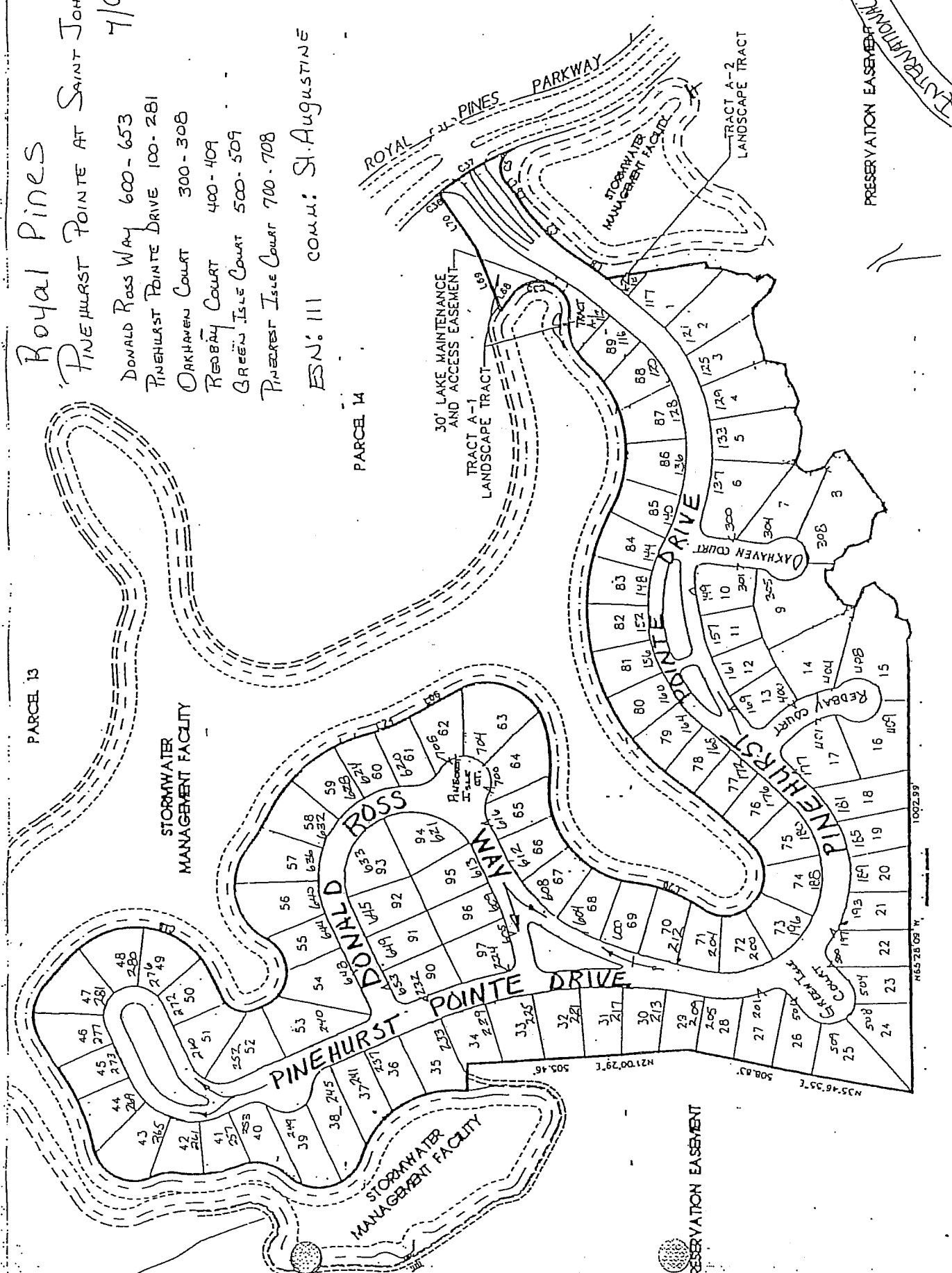
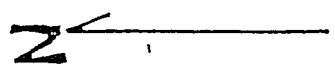


Royal Pines

PINEHURST POINTE AT SAINT JOHNS
7/97

- DONALD ROSS WAY 600-653
- PINEHURST POINTE DRIVE 100-281
- ORKHAYEN COURT 300-308
- REDBAY COURT 400-409
- GREEN ISLE COURT 500-509
- PINECREST ISLE COURT 700-708

ESN: 111 COMM: St. Augustine



INTERNATIONAL FORESTRY

PRESERVATION EASEMENT

PRESERVATION EASEMENT

PARCEL 13

PARCEL 14

STORMWATER MANAGEMENT FACILITY

STORMWATER MANAGEMENT FACILITY

30' LAKE MAINTENANCE AND ACCESS EASEMENT

PRESERVATION EASEMENT